

# AOVX VX300 Quick Start

Vehicles Tracker

# Contents

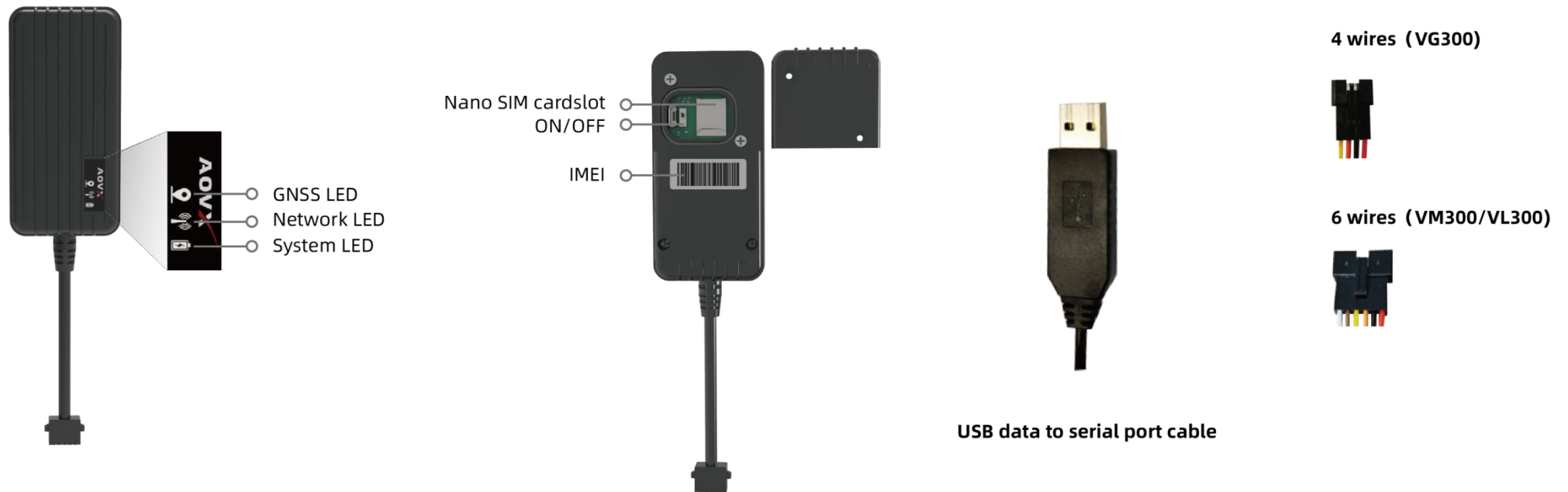
<b>Contents</b> .....	<b>2</b>
<b>1 Introduction</b> .....	<b>3</b>
1.1 Device overview .....	3
1.2 Wiring sequence .....	4
<b>2 Set up your device</b> .....	<b>5</b>
2.1 How to insert SIM card and power supply .....	5
2.2 How to connect to computer .....	6
2.3 How to install USB driver .....	6
2.4 Local configuration .....	7
<b>3 LED light indications</b> .....	<b>9</b>
<b>Safety Information</b> .....	<b>10</b>

# History

Revision	Date	Author	Description
V1.0	2021/11/29	YUKI	Initial
V1.1	2022/01/10	YUKI	Upgrade Config tool
V1.2	2022/01/25	YUKI	Upgrade wiring sequence
V2.0	2022/03/21	YUKI	Upgrade layout
V2.1	2022/03/28	YUKI	Upgrade layout
V2.2	2022/04/01	YUKI	Upgrade information of USB cable and config tool
<b>V2.3</b>	<b>2022/05/23</b>	<b>YUKI</b>	<b>Upgrade download link and tool</b>

# 1 Introduction

## 1.1 Device overview



Figure\_1 Overview of VX300

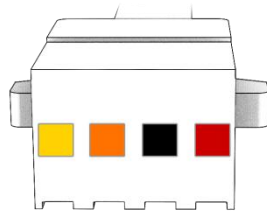


**NOTE:** Please use the USB cable provided by AOVX.

# 1.2 Wiring sequence

Table1 VG300

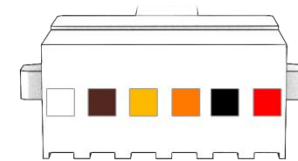
NO	COLOR	SIGNAL
1	Red	VCC
2	Black	GND
3	Orange	ACC
4	Yellow	Relay



**Figure\_2 four wires**

Table2 VM300/VL300

NO	COLOR	SIGNAL
1	Red	VCC
2	Black	GND
3	Orange	ACC
4	Yellow	Relay
5	Brown	DI1/AI1
6	White	DO1



**Figure\_3 six wires**

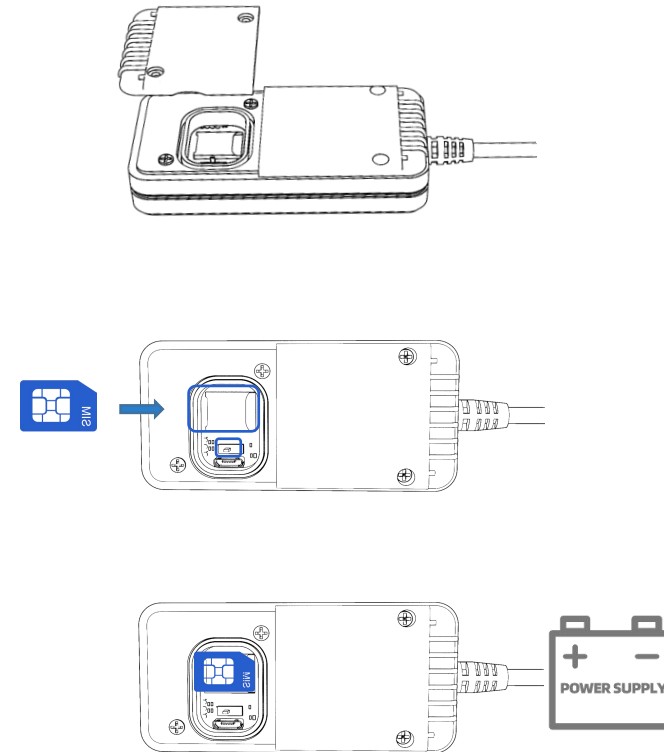
## 2 Set up your device

### 2.1 How to insert SIM card and power supply

- 1 Unscrew the screws and remove the **cover**.
- 2 Insert the **Nano SIM card**, and turn the switch to **ON**.
- 3 Connect the device to the car fuse box according to the **wiring sequence**, or click **How to install VX300**. If it is tested in the laboratory or office, ACC shall be powered , could connect circuit ACC and VCC before connecting to DC power supply



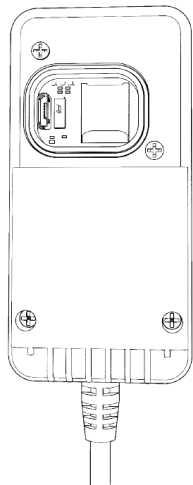
**NOTE:** Please note that device will automatically enter sleep after one minute if ACC is not powered .



Figure\_4 Insert SIM card and connect battery

## 2.2 How to connect to computer

- 1 Make sure the device is powered on and check the LED lights are in normal state. See [LED indicators](#).
- 2 Connect the device to computer via USB data to serial port cable.



Type: VX300

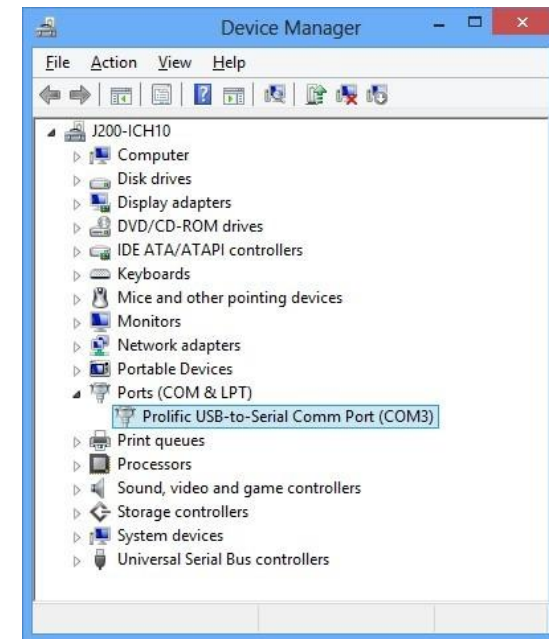


COM1

Figure\_5 Connect device via cable

## 2.3 How to install USB driver

- 1 Please download the USB-to-Serial cable driver [here](#).
- 2 Install the driver according to the prompt on the screen.
- 3 After installation, go to **Device Manager** and check for the “**Prolific USB-to-Serial Com Port**” device and the **COM port** number assigned by Windows.
- 4 You are now ready to use the device on your computer.



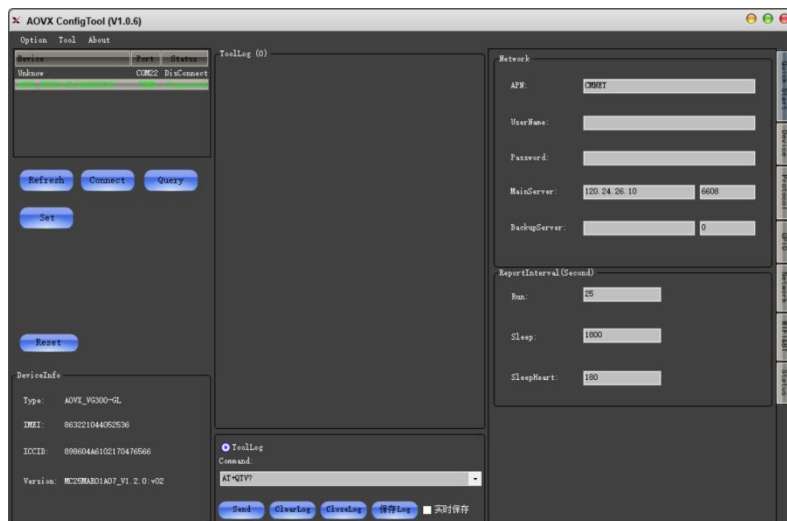
Figure\_6 Check COM port

## 2.4 Local configuration

All devices will have default factory settings. These settings should be changed according to the user's needs. If you need to change the parameters, please configure them through the latest **configuration tool**.

1 Configuration process begins by connected device to computer via cable.

Open the **configuration tool**; Select the corresponding COM port; **DeviceInfo** is in the lower left corner of the tool, it shows the **Type**, **IMEI**, **ICCID** and **Version** of the device. Main buttons offer following functionality:



Figure\_7 Config tool window

- ① **Option- Language-** Languages supported by the tool.
  - **View**- Check device log or tool log.
  - **Property**- Settings of the tool.
- ② **Tool- Protocol Analyze-** Analyze JT/T808 protocol.
  - **Download**- Loads upgrade package from file..
- ③ **About- Version-**The version of the tool.
  - Help**- If you need more information contact us here..
- ④ **Refresh-**Refresh the COM port and device information.
- ⑤ **Connect-** Connect the COM port.
- ⑥ **Query-** Query the device information.
- ⑦ **Set-** Save configuration to device.
- ⑧ **Reset-** Restart the device.
- ⑨ **Quick start-** Configure Network and Report interval.
- ⑩ **Device config-**configure the device information
- ⑪ **Network config-**configure band and LTE FDD.

2 Make sure you click **set** after every configuration. Most important configurator section is **Quick Start** – where all your server and network can be configured. More details about V series configuration can be found in **VX300 User Manual**.

## 2.5 SMS configuration

Quickly set up your device by sending SMS commands to it:

Table3 SMS commands

commands	description
IP= <index>,<ip>,<port>	configure IP
APN= <apn>,<name>,<password>	configure APN
TIMEZONE= <zone>	configure timezone
GPIOMODE= <channel>,<mode>	configure GPIO MODE

More details about SMS commands can be found in [AOVX AT commands](#).

### Default configuration settings

#### Report Interval

**Run mode:**Report every 25 seconds in run mode by default.

**Sleep mode:**Report every 1800 seconds in sleep mode by default.

**Sleepheart:**Report every 180 seconds by default.

#### Device configuration

**Maxspeed:**Report when the speed over120km/h is overspeed by default.

**Turn angle:**Report when turn angle over 25° by default.

**Shake level:**Report when shake level over 25 by default.

**Shake time:**It's in run mode when shake time over 15s by default.(only for 24V vehicles)

**Noshake time:**It's in sleep state when noshake time over 30s by default.(only for 24V vehicles)

**Crash level:**Report when crash level over 460 by default.

**Timezone:**GMT+0 by default.

**Run Voltage:**It's in run mode while over 13500V by default.(only for VG300)

**Sleep Voltage:**It's in sleep mode while lower 11850V by default.(only for VG300)

**GNSS Galaxy:** GPS+BD by default.( optional only for VM300 or VL300)



# 3 LED light indications

The three indicators are always on under the normal working state of the device, and all three indicators are off under the sleep state.

## System LED indication

Table 4 System LED

COLOR	STATE	MEANING
red	on	Main power supply
	off	No power or in sleep mode

## Network LED indication

Table 5 Network LED

COLOR	STATE	MEANING
green	on	Linking server succeeded
	off	No power or in sleep mode
	flash	Searching for network or linking servers

## GNSS LED indication


Table 6 GNSS LED


COLOR	STATE	MEANING
blue	on	GNSS positioning succeeded
	off	No power or in sleep mode
	flash	Searching GNSS

# Safety Information

This message contains information on how to operate VX300 safely. By following these requirements and recommendations, you will avoid dangerous situations. You must read these instructions carefully and follow them strictly before operating the device!

 The allowed voltage range is 9-40 V DC.

 To avoid mechanical damage, it is advised to transport the device in an impact-proof package. Before usage, the device should be placed so that its LED indicators are visible. They show the status of device operation.

 Before installing and unmounting the device from vehicle, ignition MUST be OFF.



Do not disassemble the device. If the device is damaged, the power supply cables are not isolated or the isolation is damaged, DO NOT touch the device before unplugging the power supply.



All wireless data transferring devices produce interference that may affect other devices which are placed nearby.



Please consult representatives of your vehicle model regarding VX300 location on your vehicle. In case you are not sure about proper connection, please consult qualified personnel.



The programming must be performed using a PC with autonomic power supply.



Installation and/or handling during a lightning storm is prohibited.



The device is susceptible to water and humidity.



AOVX is not responsible for any harm caused by wrong cables used for connection between PC and VX300



WARNING! Do not use VX300 device if it distracts driver or causes inconvenience due to VX300 placement. Device must not interfere with driver.



Battery should not be disposed of with general household waste. Bring damaged or worn-out batteries to your local recycling center or dispose them to battery recycle bin found in stores.